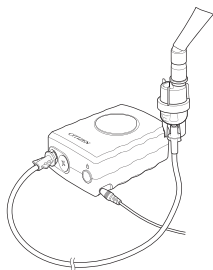


English Manual

COMPRESSOR NEBULIZER

CNC701

CITIZEN
Micro HumanTech

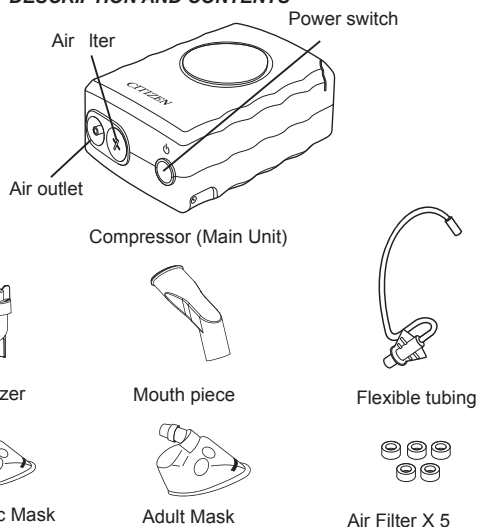


Instruction Manual

INTENDED USE

The CNC701 Compressor Nebulizer is intended to be used for inhaling medication for respiratory disorders.

PRODUCT DESCRIPTION AND CONTENTS



- AC adapter
- Carrying case
- Instruction manual
- EMC sheet

WARNINGS

- Always consult your medical practitioner before using this appliance.
- Should you feel any discomfort during use, immediately discontinue use of the device and consult your doctor or physician.
- Do not use water alone in the nebulizer for inhaling purposes.
- Never cover the compressor with a blanket, towel, or any other covering during use.
- Avoid using in locations where the device may be exposed to inflammable gas.
- Avoid using or storing in locations where the device may be exposed to noxious fumes or volatile substances.
- Do not use the device in any anesthetic or ventilator breathing circuits.
- Always unplug the appliance from its electricity supply at the end of every treatment session.
- Never operate the device with a damaged power cord or plug.
- Keep the appliance out of reach of children.
- Store the parts in a clean location to avoid contamination.
- Make sure the power cord is not in contact or near any heated surfaces.
- Never use the appliance continuously for longer than indicated on the label attached to the bottom of the appliance.

CAUTION

- Never insert fingers or objects inside the compressor.
- Always use original nebulizer parts, air tube, air filter and air filter cover that are supplied or approved by the manufacturer.
- The device is approved for human use only.
- The compressor may produce heat during operation.
- Do not puncture the nozzle of the medication chamber with a pin or any other sharp object.
- Never add more than 8 ml of medication to the medication chamber.
- Do not touch the compressor for any reason other than necessary operations such as turning off the unit during nebulization.
- Do not use the device when drowsy or sleeping.
- Never use a damaged nebulizer kit, mouthpiece.
- Always wipe the face clear of any medication residue after removing the mask.
- Make sure to remove the AC adapter from the device after use and prior to cleaning.
- Do not disconnect the power supply of the device by pulling or jerking the power cord of AC adapter from the outlet.
- The power cord of AC adapter should never be used for anything other than its intended purpose.
- Never carry, leave or store the nebulizer kit while the medication chamber contains any medication.
- Never use or store the device while the air tube is creased.
- Always provide supervision when the device is used by, on, or near children or invalids.
- Never leave the device unattended with children or individuals who are unable to express their consent.
- Never leave the device in direct sunlight or exposed to extreme heat or cold temperatures.
- User warranty is void if any changes or modifications not approved by CITIZEN SYSTEMS are made to the device.

PRECAUTION

- Do not operate the device at temperatures above 40°C.
- Do not use the device for anything other than its intended purpose.
- Some noise and vibration should be expected from the compressor pump when using this device. The emission of compressed air from the nebulizer kit will also result in some noise. These are normal sounds and do not indicate any malfunction.

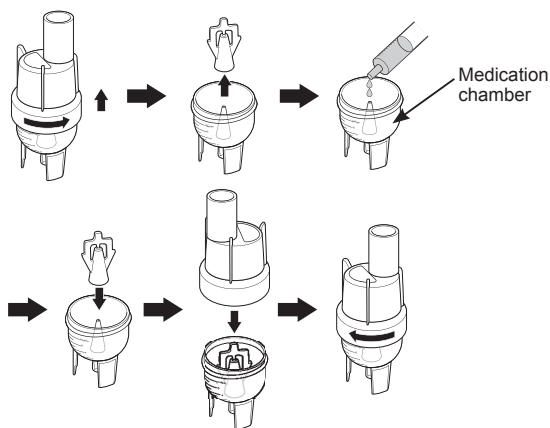
Durability Periods

- Assuming that the product is used to nebulize 8 ml of medication for 40 minutes, twice a day at room temperature (23°C), the durability period for each component is estimated as shown below. Please note that these estimates will vary depending on frequency of use.
- Compressor (main unit) 2-year period
- Nebulizer Kit (PP) 1-year period
- Mouthpiece (PP) 1-year period
- Mask (PVC) 1-year period
- Flexible tubing (PVC, 150cm) 1-year period
- Air Filter 60-day period

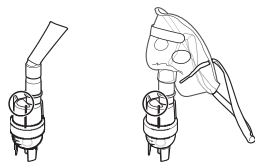
To prepare CNC701 Aerosol-therapy System for use

After ensuring that the appliance and all the accessories are completely clean, please follow this step-by-step routine:

- Place the appliance on a level and secure surface (eg. a table top) with easy access to an electrical socket.
- Take the flexible tubing and attach one end (indicated the direction on the end of Flexible tubing) to the appliance's air outlet and the other end to the bottom of the medication chamber.
- Unscrew the upper section of the medication chamber by turning it anti-clockwise.
- Put the medication to be nebulized into the medication chamber, measuring it according to the scale marked on the side of the medication chamber.
- Replace the upper section of the medication chamber, securing it by turning it clockwise.




- According to the type of treatment you wish to carry out and the method you choose, attach either the face mask or the mouthpiece to the upper section of the medication chamber.



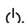
Your appliance is now ready to use.

To carry out aerosol-therapy treatment

- Plug your appliance into a socket of the correct voltage.
- Press the switch of the appliance with .
- Start the treatment and carry on for as long as you can still see the 'mist' produced by nebulization of the medication performed by the appliance.
- One treatment should be used for less than 45min (equipped with 45min-timer) and after the treatment should be taken a break at least 45 min off.

Warning: The presence of a small amount (about 0.4 ml) of medication in the medication chamber at the end of each treatment is absolutely normal. This amount, called residue volume, cannot be nebulized.

At the end of each treatment

- Turn off the appliance by pressing its switch with .
- Unplug the appliance from the power socket.
- Wind up the power supply cord.
- Detach the face mask (or mouthpiece) from the medication chamber.
- Detach the flexible tubing from both the medication chamber and the appliance's air outlet.
- Wipe the face mask (or mouthpiece) and the medication chamber, clean according to the instructions in the following paragraph.

CLEANING

To avoid inefficient nebulization or contamination, clean all parts after each use, making sure to remove any residual medication.

■ Washable parts

Wash with warm water and mild detergent (neutral detergent). Rinse each part thoroughly with clean, hot tap water and allow them to air dry in a clean location.

■ Non-washable parts

Compressor, Air Tube

After making sure that the power plug is unplugged from the power outlet, wipe clean with a soft cloth moistened with water or a mild detergent (neutral detergent).

Air Filter

Do not wash or clean the filter. If the filter becomes damp or wet for any reason, replace it immediately as it may cause air blockage.

DISINFECTING

Disinfect the parts once a week. If the parts are heavily stained, replace them with new ones.

CHANGING THE AIR FILTER

We strongly suggest that you change the air filter within 60 days, or when the filter appears grey in color. To change the filter, you will need to:

- unscrew the cover by turning it anti-clockwise with a screw driver and take off the cover of the compartment which houses the air filter.
- remove the old filter and insert a new one.
- replace the cover by turning it clockwise with a screw driver.

TECHNICAL SPECIFICATION

- Motor: Compact piston compressor model BD80 CX
- Power supply: 12VDC --- 1.25A
- Working pressure Max: >1bar=14.5PSI
- Working pressure Max: 2.0bar=29.0PSI
- Air flow: 8.0 l/min (Max.)
- Dimensions: 95(W) X 135(D) X 55(H) mm
- Weight: 430g
- Operating temperature: 10°C to 40°C (50°F to 104°F)
- Storage temperature: -40°C to 70°C (-40°F to 158°F)
- Atomizer capacity: 8ml (Max.)
- Noise level: Less than 50 dBA/1m
- Particle size: 2.44 µm

CLASSIFICATION



Class II equipment



CE mark



Keep dry



Direct current



Type B equipment



Caution



EU representative



Manufacturer



Refer to the instruction manual



Recycling



Standby

WARRANTY

The legal provisions in this respect apply. The warranty is limited to defective material and workmanship. AC adapter and cable are not covered by the warranty. The warranty is only valid if the product has neither been opened nor subjected to violence or willful damage and it is returned with the original receipt. Contact your dealer if you have any complaints. For further information, contact the customers service (E-mail: sales-oe@systems.citizen.co.jp). In the event of warranty claims being deemed to be justified, the customer concerned will be supplied with a replacement product. The customer is only entitled to receive a comparable replacement product. CITIZEN cannot be held liable for any consequential damage. Subject to error and changes.



ATTENTION – Instructions for a correct disposal of the product

This symbol indicates that the product must not be disposed with domestic waste after its usage, but in accordance with the legal provisions in force, in order to avoid negative health and environmental implications.

Notes:

- The device fulfills the provisions of EC Directive 93/42/ECC (Medical Device Directive) and European Standard EN13544-1:2007+A1:2009, Respiratory therapy equipment- Part1: Nebulizing systems and their components.
- The device may not operate properly if the temperature and voltage conditions differ from those stated in the specifications.
- Performance may vary with drugs such as those in suspension or high viscosity form. Refer to your drug supplier's data sheet for further information



BREMED LIMITED

Unit 1104, 11/F., Two Harbourfront, 22 Tak Fung Street, Kowloon, Hong Kong

CITIZEN is a registered trade mark of Citizen Holdings Co., Japan
Design and Specification are subject to change without notice.

Ver. 1401

CITIZEN SYSTEMS JAPAN CO., LTD.

6-1-12, Tanashi-cho, Nishi-Tokyo-shi,
Tokyo 188-8511, Japan

E-mail: sales-oe@systems.citizen.co.jp

<http://www.citizen-systems.co.jp/>